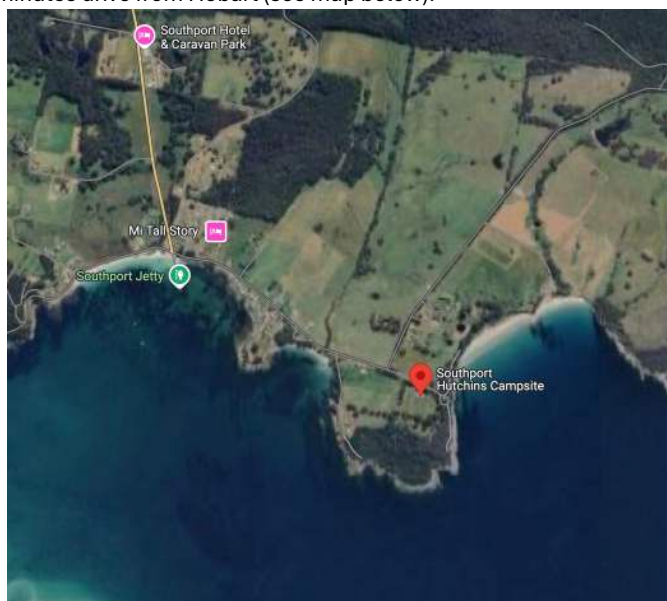


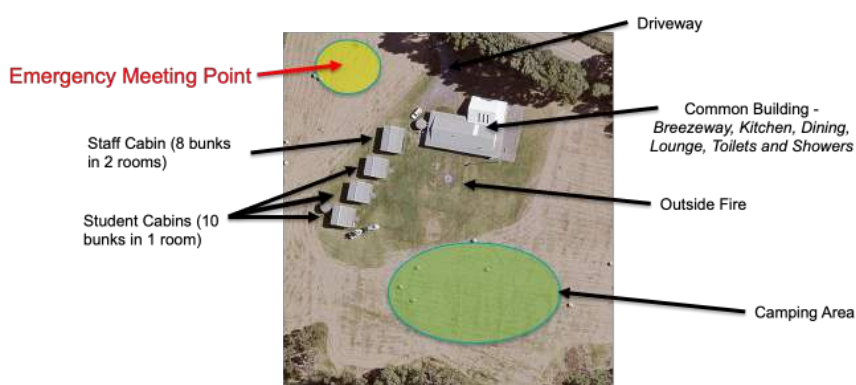
Tasmanian Field Naturalists Club Easter Camp 2026

The TFNC Easter Camp will take place from Friday 3rd-Monday 7th April 2026 at the [Stephen Hay Memorial Park, Southport](#) (Southport Hutchins Campsite). The camp is about 90 minutes drive from Hobart (see map below).



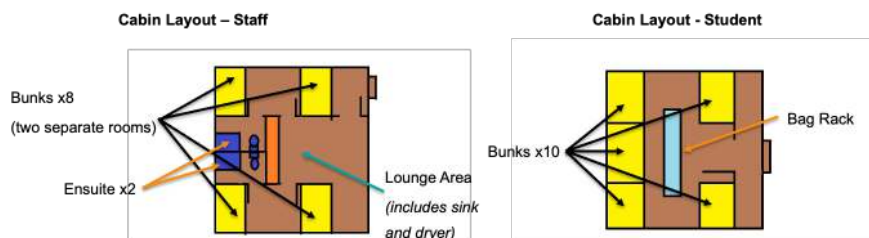
Location of Southport Hutchins Campsite

The campsite is well appointed with four accommodation blocks with bunk beds in them and lots of open space for those who would rather camp. Kitchen, dining, lounge and shower facilities are all available on-site.



Detail of Southport Hutchins Campsite

Details of the layout of the cabins are shown below:



Southport is located in a fascinating area of Tasmania with many interesting local excursions including:

Roussel/Herriott's Point	Hasting Caves
Southport Bluff	Hartz Peak
Southport Lagoon	Lake Esperance
Fishers Point	Lake Osbourne
Lion Rock/South Cape Bay	Arve Falls
Duckhole Lake	Garrett's Bight
Adamson's Falls	Pigsty Bridge
Mystery Creek Cave	Tahune Airwalk



Arve Falls (TPWS).

If you are interested in attending the camp, we encourage you to sign up using [TryBooking here](#)

Commented [MSK1]: Insert link here